

**#904 - 1499 W PENDER STREET
 VANCOUVER**

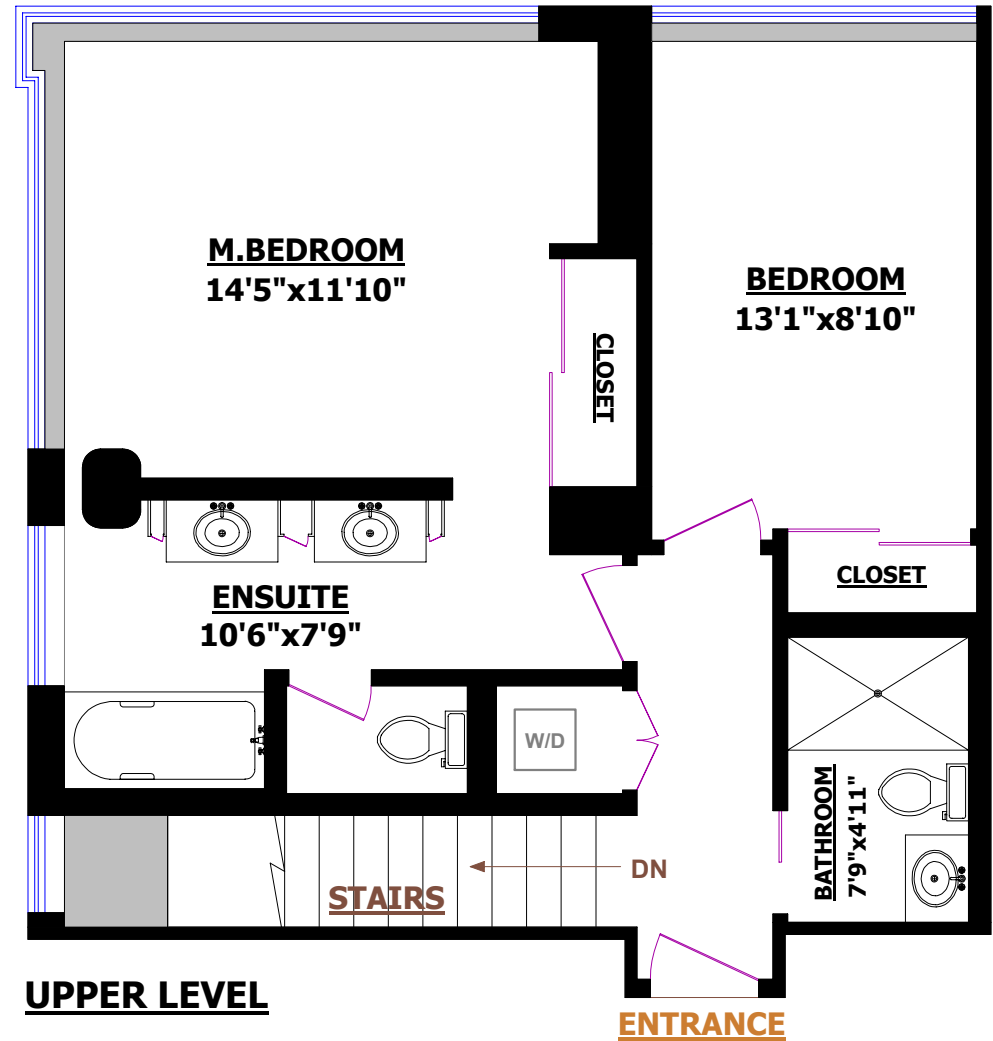
TOTALS*	
Main Floor:	636 sq.ft.
Upper Level**:	662 sq.ft.
GRAND TOTAL**:	1,298 sq.ft.
GRAND TOTAL***:	1,247 sq.ft.

** Includes Stairs, 51 sq.ft.
 *** Excludes Stairs to Upper Level

* Measured to exterior of walls and to the middle of the common walls
 * These measurements are not taken from the Strata Plan.



MAIN FLOOR



UPPER LEVEL

